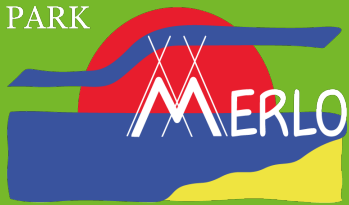


PARK



PARK MERLO

Koningin Astridlaan 15, 8450 Bredene
 +32 (0)59 32 05 99 | info@park-merlo.be | www.park-merlo.be



Holiday Homes "Merlo"



Chalet / Mobile home

ACCOMMODATIONS AND PRICES 2025



Short Weekend (Fri-pm to Sun-pm)	Long Weekend* (Fri-pm to Mon-am)	Midweek (Mon-pm to Fri-am)	Week (Fri-pm to Fri-am)	Variants** min. 2 nights on Sun/Mon/Tue/Wed/Thu	Variants** min. 2 nights on Fri/Sat/Holiday
-------------------------------------	-------------------------------------	-------------------------------	----------------------------	-------------------------------------------------------	---------------------------------------------------

LOW SEASON

Holiday home	234 €	292 €	300 €	572 €	70 € / night	101 € / night
Chalet	222 €	276 €	283 €	539 €	66 € / night	95 € / night

MID SEASON

Holiday home	266 €	334 €	340 €	654 €	80 € / night	117 € / night
Chalet	257 €	321 €	327 €	629 €	77 € / night	112 € / night

SUMMER SEASON

	04/07 - 11/07	11/07 - 18/07	18/07 - 25/07	25/07 - 01/08	01/08 - 08/08	08/08 - 15/08	15/08 - 22/08	22/08 - 29/08
Holiday home	832 €	892 €	892 €	892 €	892 €	892 €	832 €	832 €
Chalet	800 €	866 €	866 €	866 €	866 €	866 €	800 €	800 €

JANUARY 2025

MO	TU	WE	TH	FR	SA	SU
		1	2	3	4	5
6	7	8	9	10	11	12
13	14	15	16	17	18	19
20	21	22	23	24	25	26
27	28	29	30	31		

FEBRUARY 2025

MO	TU	WE	TH	FR	SA	SU
						1 2
3	4	5	6	7	8	9
10	11	12	13	14	15	16
17	18	19	20	21	22	23
24	25	26	27	28		

MARCH 2025

MO	TU	WE	TH	FR	SA	SU
						1 2
3	4	5	6	7	8	9
10	11	12	13	14	15	16
17	18	19	20	21	22	23
24	25	26	27	28	29	30
31						

APRIL 2025

MO	TU	WE	TH	FR	SA	SU
						1 2 3 4 5 6
7	8	9	10	11	12	13
14	15	16	17	18	19	20
21	22	23	24	25	26	27
28	29	30				

MAY 2025

MO	TU	WE	TH	FR	SA	SU
						1 2 3 4
5	6	7	8	9	10	11
12	13	14	15	16	17	18
19	20	21	22	23	24	25
26	27	28	29	30	31	

JUNE 2025

MO	TU	WE	TH	FR	SA	SU
						1
2	3	4	5	6	7	8
9	10	11	12	13	14	15
16	17	18	19	20	21	22
23	24	25	26	27	28	29
30						

JULY 2025

MO	TU	WE	TH	FR	SA	SU
		1	2	3	4	5 6
7	8	9	10	11	12	13
14	15	16	17	18	19	20
21	22	23	24	25	26	27
28	29	30	31			

AUGUST 2025

MO	TU	WE	TH	FR	SA	SU
						1 2 3
4	5	6	7	8	9	10
11	12	13	14	15	16	17
18	19	20	21	22	23	24
25	26	27	28	29	30	31

SEPTEMBER 2025

MO	TU	WE	TH	FR	SA	SU
		1	2	3	4	5 6 7
8	9	10	11	12	13	14
15	16	17	18	19	20	21
22	23	24	25	26	27	28
29	30					

OCTOBER 2025

MO	TU	WE	TH	FR	SA	SU
						1 2 3 4 5
6	7	8	9	10	11	12
13	14	15	16	17	18	19
20	21	22	23	24	25	26
27	28	29	30	31		

NOVEMBER 2025

MO	TU	WE	TH	FR	SA	SU
						1 2
3	4	5	6	7	8	9
10	11	12	13	14	15	16
17	18	19	20	21	22	23
24	25	26	27	28	29	30

DECEMBER 2025

MO	TU	WE	TH	FR	SA	SU
						1 2 3 4 5 6 7
8	9	10	11	12	13	14
15	16	17	18	19	20	21
22	23	24	25	26	27	28
29	30	31				

Low Season
 Mid Season
 Summer Season
 Holiday

* Long weekends with holidays have different prices.

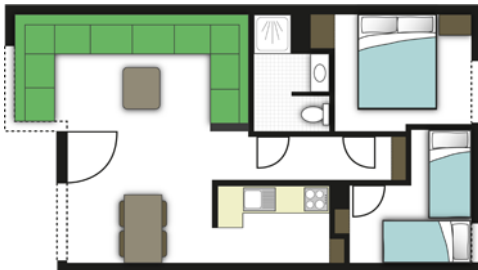
** When choosing a variant, a reservation fee of 20 € is charged.

Chalets and mobile homes are not rented from mid-October to the end of March.

Holiday homes "Merlo"



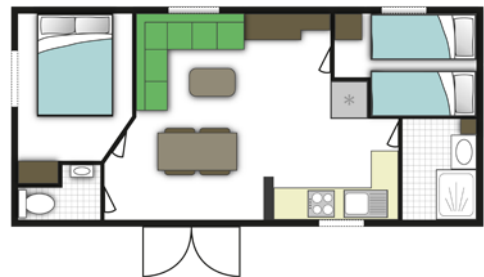
Holiday apartment for 5 persons, located on the ground floor or on the first floor (accessible via an outside staircase) consisting of living room with kitchen corner, a sitting area with TV and DVD player, bathroom (washbasin, shower, toilet) and 2 bedrooms (1 double bed + 3 single beds), terrace, WiFi.



Chalet/Mobile home type "O'Hara"



Residential chalet for 4 persons, ± 32m², consisting of living room with sitting area (with TV) and cooking corner, a bedroom with double bed, a small bedroom with 2 single beds, bathroom with shower, separate toilet, terrace and Wi-Fi.



TERMS AND CONDITIONS

GENERAL

1. Long weekends with holidays and vacations are generally let as one. The booking for long weekends cannot start or end on Saturday or Sunday.
2. A stay starts at 16h on the day of arrival and ends before 11h on the day of departure. With the "Short weekend" formula, the stay ends before 4 p.m.
3. The prices include 6% VAT and use of water and heating. Electricity costs 0,50 €/kWh when consumption exceeds 4 kWh/night.
4. Deposit: 100 €, to be paid in advance by bank transfer.

SUPPLEMENTS

1. Second car: 5 € / day (depending on the space available)
2. Dog: 6 € / day
(only one dog bigger than 30cm allowed + dangerous dogs according to MB21/10/98 are prohibited)
3. Cleaning on departure: 70 €
(will be deducted from the deposit on departure)
4. Childrens bed or chair: 2 € / day
5. Linen package: 10 € / person
6. Early arrival: 12 € (arrival from 10 am)
7. Delayed departure in the afternoon: 12 €
(for "short weekends", residence is considered to 16h)
8. Internet (WiFi): included